

Raychem

excellence is everything

Life Cycle Services



Chemelex Solutions

As the world's largest provider of complete electrical heat management systems, primarily for general process, oil and gas, power generation, commercial building, data center and rail and transit applications, Chemelex provides innovative products and turnkey solutions under the market-leading brand - Raychem. Our premiere turnkey solutions include full life cycle support—ranging from front-end engineering and installation to maintenance, operation and upgrade services. Our global experience and office presence in 48 countries uniquely position us to manage the heat needed for projects of any size and scope.

The Heart of Our Offering

By focusing on safety and utilizing time-tested methods and solutions, Raychem's heat tracing designs and installations are timely, thorough, and cost effective.

After the installation is commissioned, Raychem employs Life Cycle Service solutions to create peace of mind, ensure your system is operating as-designed to reduce unplanned downtime, save energy, extend the service life of critical assets and minimize total operating costs throughout the life of the installation.

Raychem Life Cycle Services are focused on maximizing the operational integrity of your mission-critical systems. From addressing staffing challenges and controlling overall maintenance spend to maintaining and increasing system performance, Raychem has the experience and range of services to fit your operation.

We Protect Your Processes, Assets, and People



Table of Contents

Life Cycle Services	3
Overview	3
Performance Assurance	4
Solutions	5
System Assessments.....	5
Field Support Services.....	5
Remote Services	5
Embedded Services.....	5
Upgrades & Modernization	5
Adaptive Services Programs.....	5

Life Cycle Services

Overview



Industrial plants and commercial buildings are often exposed to a wide array of unfavorable events including changes in temperature, weather conditions, corrosion, external loading, physical impact and even human error which can negatively impact the safety and performance of process environments. The effects of hidden issues and damaged equipment can compound the detrimental effect on day-to-day operations.

Raychem Life Cycle Services help you to extend the lifetime performance of your critical assets by:

- Delivering solutions that are tailored to address your specific operational needs.
- Leveraging Raychem's decades of experience in identifying, troubleshooting and repairing heat management and leak detection systems.
- Utilizing offerings that have a pre-defined scope of work.
- Enabling you to appropriately budget for and schedule site-essential system maintenance.

The combination of these services combined with our dedicated Raychem heat trace experts results in:

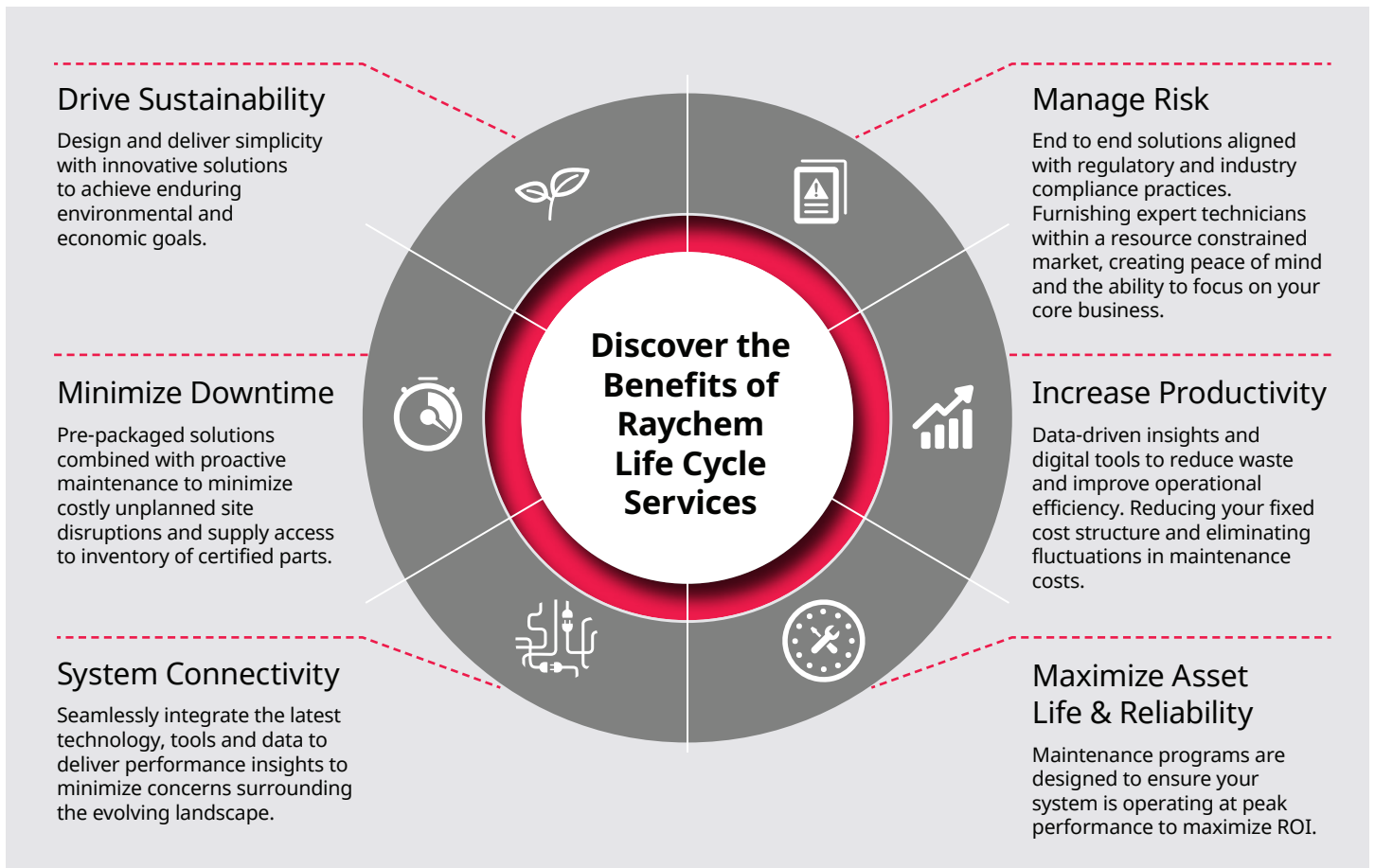
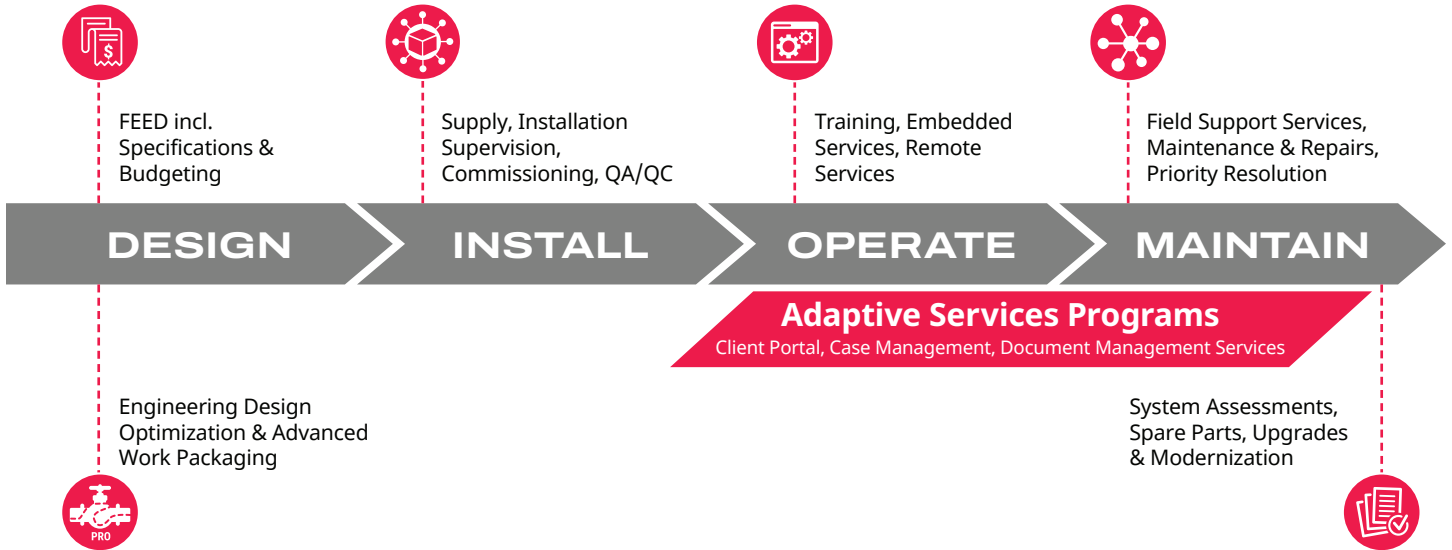
- Effective trouble shooting of existing systems.
- Increased operational uptime, while allowing you to minimize costly, unplanned site disruptions.
- A safer, more reliable and profitable asset.

Raychem Life Cycle Services help you to extend the lifetime performance of your critical assets by delivering tailored solutions.

Life Cycle Services

Overview

PERFORMANCE ASSURANCE



Life Cycle Services

Solutions

WHAT ARE LIFE CYCLE SERVICES (LCS)?

Life Cycle Services begin after the system is handed over post-commissioning and focus on site Maintenance, Repairs, & Optimizations.

- Services are performed on-site or remotely by dedicated local experts.
- Services are supported with the latest cybersecure digital tools for accurate & efficient recordkeeping.
- Services are standardized for ease of ordering and to ensure the scope of work is executed consistently, safely and efficiently.

System Assessments



Audits of installations to discover trending issues and validate system integrity, including post assessment spare part recommendations.

Field Support Services



Dedicated technical experts are deployed to efficiently diagnose, troubleshoot and/or repair heat management and leak detection systems.

Remote Services



Dedicated technical experts are deployed virtually to efficiently diagnose and/or troubleshoot heat management systems using the latest cybersecure digital tools.

Embedded Services



On-Site Services to support with EHT Alarm management, creation of TracerLynx 3D isometrics, 2D design work or to support with local job-site technical, maintenance and upgrade requirements.

Upgrades and Modernization



Program caters to the specific needs of each customer, with offerings including communication and controller upgrades, integrated system architecture, DCS integration, cybersecurity requirements, temporary panels and various on-site solutions aimed to minimize operational disruptions, while building a plan to account for site-specific budgetary management.

Adaptive Services Program



Annual program providing you access to a fixed menu of token-based service offerings performed by dedicated skilled experts, including On-site, Virtual, Training, Engineering, and Priority Response. Services are ordered and tracked through a site-specific customer portal, unique to your individual serviceable site, supplying access to your site documents, drawings and deliverables, tailored and assigned to your serviceable site hierarchy.



For more information, please contact your Chemelex representative. Visit [chemelex.com](https://www.chemelex.com)

Europe, Middle East, Africa, India

Tel +32 16 213 511

Fax +32 16 213 604

info@chemelex.com

chemelex
excellence is everything

Raychem Tracer Pyrotenax Nuheat